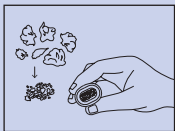
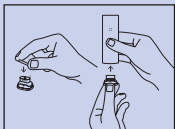


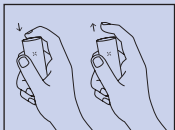
# First Session



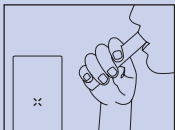
- 1** Flower: Grind material and pack tightly into oven.



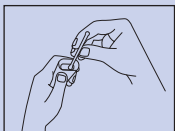
- 2** Concentrates: Remove oven screen. Open concentrate chamber lid. Place material within circle. Close lid, and place insert into oven.



- 3** Press and release mouthpiece to power on your PAX PLUS.

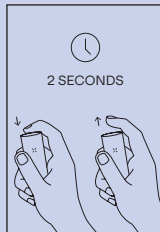


- 4** Wait for "X" to turn green. Enjoy. Remember: sip don't rip.



- 5** Use included maintenance kit to clean device every 3-5 uses. Visit [pax.com/support](http://pax.com/support) for tips.

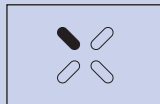
# Experience Modes



With device powered on, long-press mouthpiece for 2 seconds and release.

Use short presses to cycle through Experience Modes.

To select a Mode, long-press mouthpiece again or simply shake your PAX PLUS.



## STEALTH MODE

Produces minimal vapor; dims LEDs and vibration settings for discreet sessions.



## EFFICIENCY MODE

Conserves material for longer lasting sessions.



## FLAVOR MODE

Delivers a balance of flavor and vapor throughout your sessions.



## BOOST MODE

Provides maximum vapor production, ideal for concentrates.

# Device Anatomy

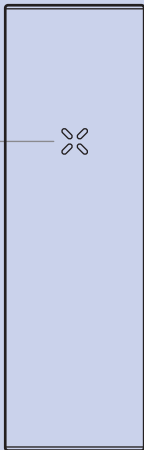
Flat Mouthpiece



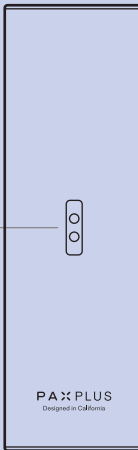
Raised Mouthpiece



Indicator LEDs



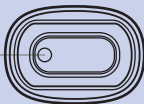
Charge Pins



Multi-Tool



Oven



Screen



Standard Lid



Half-Pack Lid



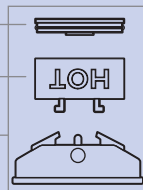
Chamber Lid & O-Ring



Concentrate Chamber



Concentrate Insert



Read all the safety information included before using this device.



[MagicVaporizers](#) – Europe's Best Shop for Vaporizers

- Lowest prices
- Fastest shipping
- Most trusted warranty

